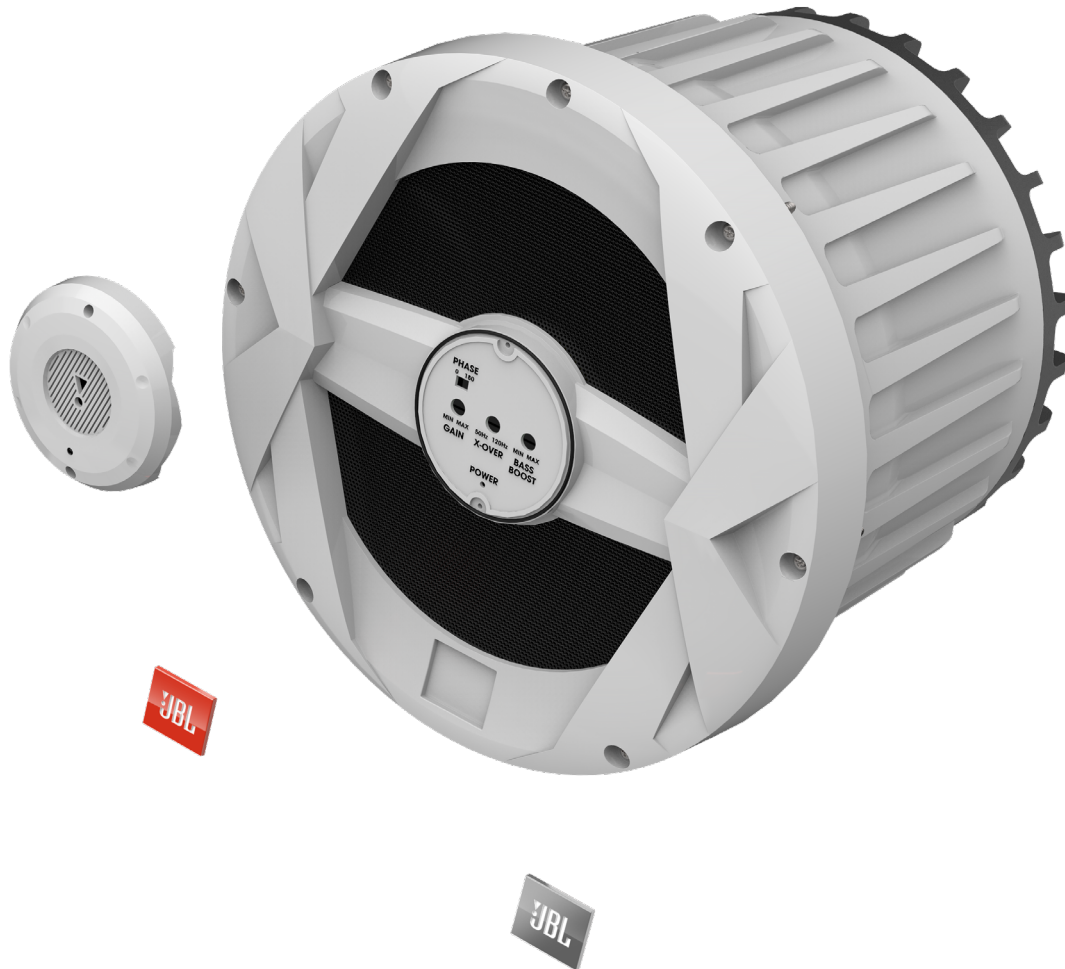




MARINE BASSPRO

10" (250mm) Marine Audio 250W Powered Subwoofer System



Engineered for the Ultimate Sound Experience.

JBL Marine BassPro 10-inch powered subwoofer is ready to take on your next outdoor adventure. These fully marinated subwoofers deliver high-quality JBL sound. Engineered to withstand sun, salt, sea spray and wash downs, they feature a sealed motor structure, UV-resistant one-piece cast-polymer baskets, a sealed magnet and rubber surrounds. The polypropylene cone and butyl surround provide great bass, and lots of output to ensure every note can be heard loud and clear.

Features

- ▶ One Model to Suit All Applications and Environments
- ▶ IPX5 Rated
- ▶ Cosmetic Appeal
- ▶ Outdoor Performance
- ▶ Product Value
- ▶ Big, Dynamic Power
- ▶ Designed for the Elements
- ▶ Engineered for Harsh Marine Conditions
- ▶ Tuning Options for Systems of Any Size
- ▶ Optimize Performance in Any Location
- ▶ Easy Installation in Tight Spaces
- ▶ Harman Standard Reliability Testing
- ▶ Individually Voiced



MARINE BASSPRO

10" (250mm) Marine Audio 250W Powered Subwoofer System



Features and Benefits

One Model to Suit All Applications and Environments

MBP10—10" (250mm) marine audio 250W powered subwoofer system.

IPX5 Rated

Marine-grade materials and components to suit the demands of a harsh outdoor environment with an IPX5 marine rating.

Cosmetic Appeal

Product family look and feel to meet the needs of our JBL customers.

Outdoor Performance

Accentuated performance at frequencies heard in an open-air environment.

Product Value

Great performance at an affordable price point.

Big, Dynamic Power

The JBL MBP10 has an output of 250 watts RMS and a peak power output of 750 watts. Enough to fill the fresh, open air with great sound.

Designed for the Elements

The one-piece polymer basket is designed to stand the test of time, even after long exposure to the sun and salt. Rubber surrounds offer superior edge protection and are much more reliable than foam. And a grille-mounted crossover allows for accessible adjustment to controls after the subwoofer is installed.

Engineered for Harsh Marine Conditions

With a marinized circuit board, stainless steel hardware and all the right waterproofing, the MBP10 is, like all JBL marine audio products, built to survive salt water, corrosion and other risks – while showing you a great time on the open seas.

Tuning Options for Systems of Any Size

The JBL MBP10 has a built-in 12dB electronic crossover that provides adjustment from 50Hz to 120Hz.

Optimize Performance in Any Location

A variable bass-boost circuit provides additional control right in the sweet spot of 40Hz. So if you are looking for more or less punch, simply dial it in.

Easy Installation in Tight Spaces

Owning a boat takes commitment and work. Installing the JBL MBP10? Not so much. It's pretty compact with a low profile heat sink, and a reduced outer diameter of 11-1/2-inches. You can put it in the tightest of spots.

Harman Standard Reliability Testing

JBL speakers have to undergo a testing process that would destroy lesser speakers. JBL freezes them, bakes them, shakes them, blasts them with ultraviolet light and drives them at full power for days at a time. In the case of our marine speakers, we add salt spray and UV to ensure that they provide years of enjoyment without missing a beat.

Individually Voiced

For most brands, off-the-shelf speakers and a cursory approval of frequency response curves are good enough. That's not the case with JBL. We not only listen to our speakers against the competition — we voice them against each other to ensure each line has the consistent JBL sound signature that's known and sought out by those who care about their audio. This is just part of an extensive development process undertaken by some of the best transducer engineers in the world to provide the finest listening experience at any price point.

What's in the box:

Powered Subwoofer with Attached Grille
Stainless Steel Mounting Hardware
Crossover Cover and Gasket
Spare Fuse
2x JBL Sticker
Quick Start Guide

Technical Specifications:

- ▶ Max Power: 750W Peak
- ▶ RMS Power: 250W
- ▶ Signal-to-Noise Ratio: >75dB
- ▶ Frequency Response: 40Hz–120Hz
- ▶ Max. Current Draw: 27A



HARMAN International Industries, Incorporated
8500 Balboa Boulevard, Northridge, CA 91329 USA
www.jbl.com

© 2018 HARMAN International Industries, Incorporated. All rights reserved. JBL is a trademark of HARMAN International Industries, Incorporated, registered in the United States and/or other countries. Features, specifications and appearance are subject to change without notice.